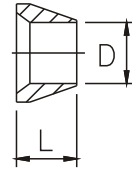


## FRONT FERRULE



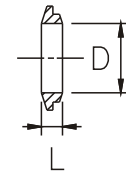
### METRIC TUBING

TUBE O.D. D	WINSEAL NUMBER	L
6	6MFF	4.8
8	8MFF	4.8
10	10MFF	6.4
12	12MFF	7.4
16	16MFF	7.4
20	20MFF	7.4
25	25MFF	9.9

### FRACTIONAL TUBING

TUBE O.D. D	WINSEAL NUMBER	L
1/8	2IFF	0.19
1/4	4IFF	0.19
5/16	5IFF	0.19
3/8	6IFF	0.19
1/2	8IFF	0.29
5/8	10IFF	0.29
3/4	12IFF	0.29
1	16IFF	0.39

## BACK FERRULE



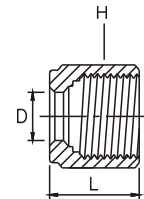
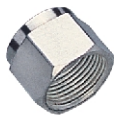
### METRIC TUBING

TUBE O.D. D	WINSEAL NUMBER	L
6	6MBF	2.5
8	8MBF	2.5
10	10MBF	2.5
12	12MBF	3.8
16	16MBF	3.8
20	20MBF	3.8
25	25MBF	5.1

### FRACTIONAL TUBING

TUBE O.D. D	WINSEAL NUMBER	L
1/8	2IBF	0.10
1/4	4IBF	0.10
5/16	5IBF	0.10
3/8	6IBF	0.10
1/2	8IBF	0.15
5/8	10IBF	0.15
3/4	12IBF	0.15
1	16IBF	0.20

## NUT



### METRIC TUBING

TUBE O.D. D	WINSEAL NUMBER	L	H
6	6MNT	12.7	14.0
8	8MNT	13.5	16.0
10	10MNT	15.0	19.0
12	12MNT	17.4	22.0
16	16MNT	17.5	25.0
20	20MNT	19.0	30.0
25	25MNT	22.0	38.0

### FRACTIONAL TUBING

TUBE O.D. D	WINSEAL NUMBER	L	H
1/8	2INT	5/32	7/16
1/4	4INT	1/2	9/16
5/16	5INT	1/2	5/8
3/8	6INT	9/16	11/16
1/2	8INT	11/16	7/8
5/8	10INT	11/16	1
3/4	12INT	11/16	1 1/8
1	16INT	13/16	1 1/2